

Pentref bach llawn cymeriad ar lannau afon Dwyfor ydi Llanystumdwy a dyna fan cychwyn y daith hon sy'n mynd â ni drwy dir amaethyddol at aber Dwyfor a'i olygfeydd panoramig o Fae Tremadog a'i fynyddoedd. Wrth ddychwelyd, cawn olwg ar ran uchaf y pentref a'i dai diddorol a gwerthfawrogi cysylltiad y lle gyda'r gwleidydd David Lloyd George.

## Manylion y daith

**Amcan o hyd:** 5 km/3 milltir.

**Amcan o'r amser:** 1.5 awr.

**Map AO:** graddfa 1:25 000 Explorer 254.

**Man cychwyn/gorffen:** Maes parcio Llanystumdwy, SH476 384.

## Mynediad a chyfleusterau

**Parcio:** Maes Parcio Llanystumdwy, lle i 50 car, LL52 0SH.

**Bws:** Pwllheli/Porthmadog i Lanystumdwy: [www.gwynedd.llyw.cymru/cy/Trigolion](http://www.gwynedd.llyw.cymru/cy/Trigolion)

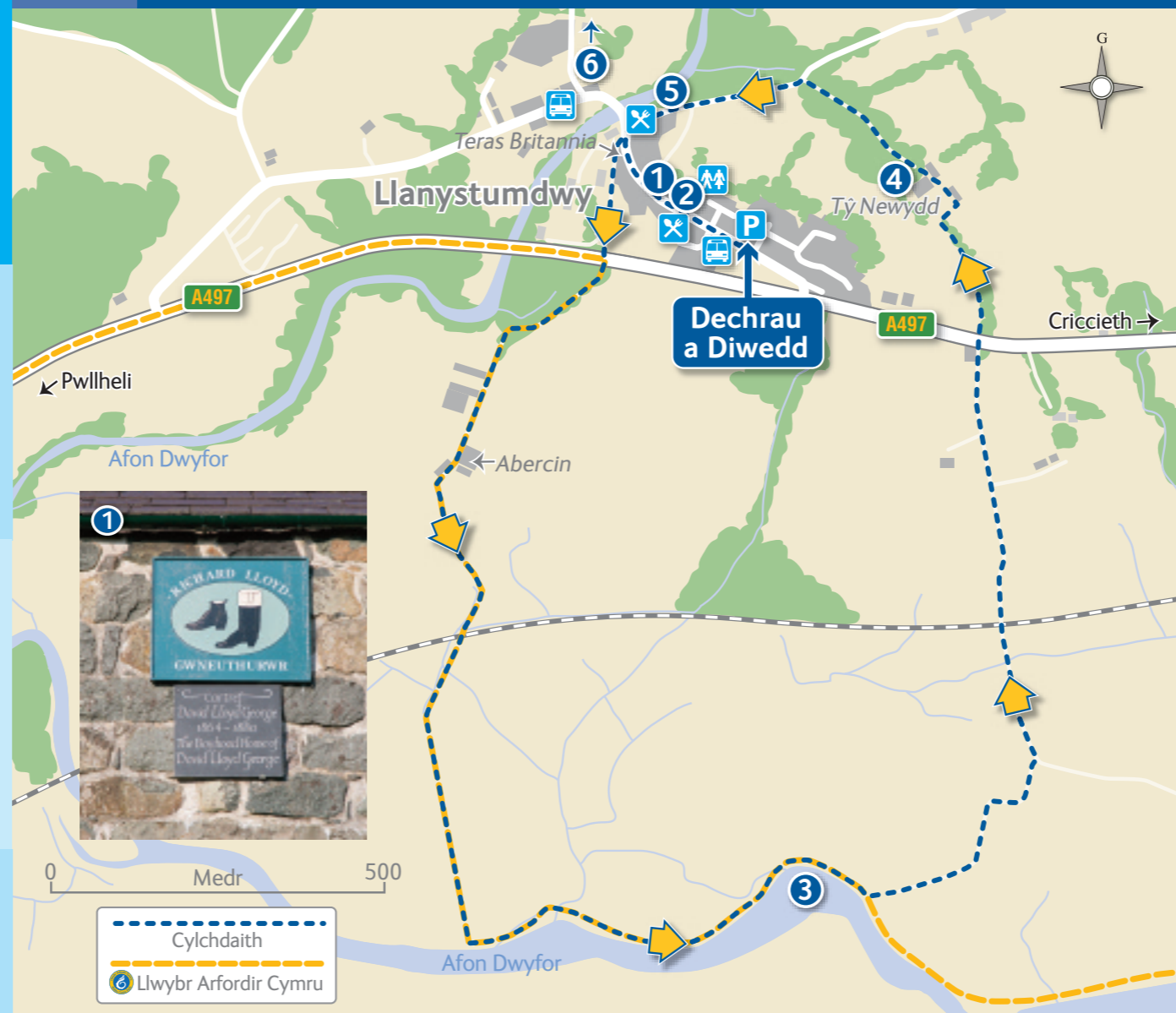
**Toiledau:** 50m y tu ôl i Neuadd y Pentref.

**Lluniaeth:** Caffi tymhorol ger y bont; Tafarn y Plu yw unig dafarn y pentref.

## Nodwch

- Llwybrau a ffyrdd eithaf gwastad yw crynswth y daith hon ond mae'n croesi llecyn corsiog ger yr aber, felly mae angen esgidiau addas.
- Mae'r tro hwn yn croesi **priffordd yr A497** (ddwywaith) a **rheilffordd** y Cambrian – rhaid cymeryd pob gofal.
- Braslun yw'r map hwn. Argymhellir defnyddio'r **map AO** uchod.
- Cofier gadw at y Còd Cefn Gwlad: **Parchwch, Diogelwch, Mwynhewch** [naturalresources.wales/media/3598/cod-cefn-gwlad.pdf](http://naturalresources.wales/media/3598/cod-cefn-gwlad.pdf)

# 14 Cylchdaith Llanystumdwy



## Cyfarwyddiadau'r gylchdaith

O'r maes parcio, ewch i brif stryd y pentref gan droi i'r dde i gyfeiriad Pwllheli. Heb fod ymhell o'r bont, dilynwch lwybr y tu ôl i dŷ teras Britannia ar eich llaw chwith. Ar ôl gadael gerddi'r pentref byddwch yn croesi'r briffordd A497 ac yn mynd ar hyd ffordd fferm Abercin. Heibio'r ffermdy a throi i'r chwith, yna drwy'r caeau ac ar draws y rheilffordd at afon Dwyfor a'r arfordir. Mae'r llwybr yn dilyn yr afon tua'r aber cyn troi yn ôl drwy dir amaethyddol a dychwelyd i'r pentref. Wedi croesi'r briffordd A497 am yr eildro, mae dringfa fer i fyny cae llechweddog at Dŷ Newydd a'i bensaernïaeth ddiddorol. Yna i lawr yr allt a dilyn cwrs yr afon drachefn yn ôl i brif stryd Llanystumdwy. Troi i'r chwith yn ôl am y maes parcio/lle bws.

## Mannau o ddiddordeb

Mae **Amgueddfa Lloyd George** ① yng nghanol Llanystumdwy. Y pentref hwn a'i ddiwylliant rhyddfrydol, anghydfurfiol, Cymraeg a roddodd wreiddiau a diwylliant i'r arweinydd a fu'n un o wleidyddion dylanwadol y Rhyfel Byd Cyntaf a Gwrthryfel Iwerddon. Mae'r amgueddfa yn cofnodi'i yrfa a rhan ohoni yw'r tŷ teras *Highgate*, cartref a gweithdy ei ewythr, Richard Lloyd, a'r man lle cafodd y darpar brifweinidog ei fagu.

Gerllaw mae **Neuadd y Pentref** ②. Codwyd y neuadd yn 1912 drwy rodd gan Lloyd George, sef yr arian a enillodd mewn achos enllib. Bu'r seremoni agoriadol yn un ddramatig gan i aelodau o fudiad y *suffragettes* fanteisio ar y cyfle i hyrwyddo eu brwydr dros bleidlais i ferched.

Mae **aber afon Dwyfor** ③ yn lle da i gadw llygad ar fyfyr natur. Daw adar mudol, tymhorol yma, bydd ambell eog yn neidio yn yr afon yn niwedd yr haf ac efallai y cewch gip ar ddyfrgi yma.

Canolfan Ysgrifennu sydd wedi'i leoli yn **Nhŷ Newydd** ④ erbyn hyn. Codwyd y tŷ yn wreiddiol gan Lloyd George ac mae'n enghraifft nodedig o waith y pensaer Clough Williams-Ellis (sylfaenydd Portmeirion). Yn 1990, trosglwyddwyd yr eiddo ar gyfer ei ddefnyddio fel canolfan cyrsiau preswyl llenyddol a chreadigol.

Mae gwaith cerrig crefftus o gwmpas **Bedd Lloyd George** ⑤ uwch afon Dwyfor. Cafodd y cyn-brifweinidog, Arglwydd Dwyfor erbyn hynny, ei ddymuniad o gael ei gladdu ar y safle hwn uwch afon bro ei febyd. Cynlluniwyd y gofeb gan Clough Williams-Ellis ac mae'n cynnwys telyneg ac englyn gan feirdd lleol.

Mae Llanystumdwy hefyd yn enwog fel **cartref Wil Sam** ⑥. Dramodydd, sgwennwr a chwmnïwr difyr a ffraeth oedd Wil Sam (W. S. Jones). Mae'i lun ar wal Tafarn y Plu a chynhelir gŵyl flynyddol yma i gofio am ei gyfraniad. Cafodd ei eni (yn 1920) a'i fagu'n Nhy'n Llan ger y bont a'r eglwys, a bu'n cadw garej y Crown gerllaw. Gyda'i frawd, Elis Gwyn, ffurfiodd Theatr y Gegin yng Nghriccieth ac mae'r rhan fwyaf o Gymry yn ei gofio o hyd fel 'tad' Ifas y Tryc.





Llanystumdwy is a charming little village on the banks of the river Dwyfor, and is the starting point of this walk which takes us through farmland to the Dwyfor estuary and its panoramic views of Tremadog Bay and the mountains. On our return, we visit the upper part of the village with its interesting houses and enjoy the area's links with the politician, David Lloyd George.

## Walk details

**Approx. distance:** 5 km/3 miles.

**Approx. time:** 1.5hrs.

**OS Map:** 1:25 000 scale Explorer Map 254.

**Start/Finish:** Llanystumdwy car park, SH476 384.

## Access and amenities

**Parking:** Llanystumdwy Car Park, 50 spaces, LL52 0SH.

**Bus:** Pwllheli/Porthmadog to Lanystumdwy:  
www.gwynedd.llyw.cymru/cy/Trigolion

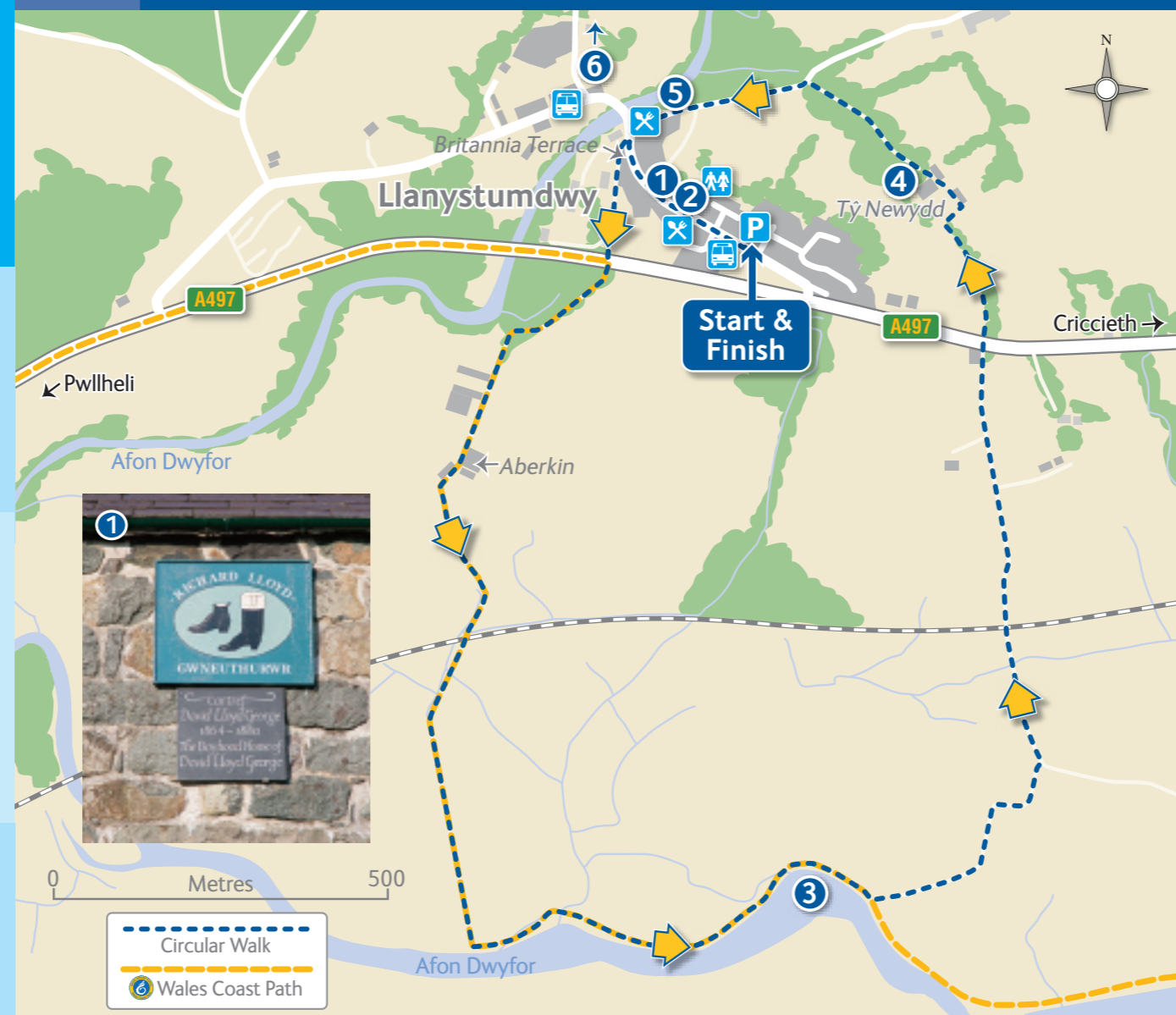
**Toilets:** 50m behind the Village Hall.

**Refreshment:** Seasonal cafe by the bridge in the summer; The Feathers Inn is the only village pub.

## Please note

- On the whole, the paths and roads on this route are quite even, but it crosses a marshy patch by the estuary and requires appropriate footwear.
- This walk crosses the **A497 main road** (twice) and the Cambrian **railway** – please take care.
- This map is a rough guide only. We recommend you use the above **OS map**.
- Remember to adhere to the Countryside Code:  
**Respect, Protect, Enjoy**  
[naturalresources.wales/media/1369/the-countryside-code.pdf](http://naturalresources.wales/media/1369/the-countryside-code.pdf)

# 14 Llanystumdwy Circular walk



## Walk directions

From the car park, go to the village's main road, turning right in the direction of Pwllheli. Not far from the bridge, follow the path behind the Britannia terrace on your left. After leaving the village gardens, you will cross the A497 and continue along the Aberkin farm road. Go past the farmhouse and turn left, then through the fields and across the railway to the river Dwyfor and the coast. The path follows the river towards the estuary before turning back through farmland and returning towards the village. After crossing the A497 for the second time, there is a short ascent in the sloping field to Ty Newydd and its interesting architecture. Then continue down the hill and follow the course of the river again back to the main road of Llanystumdwy. Turn left back towards the car park/bus stop.

## Points of interest

The **Lloyd George Museum** ① is located in the centre of Llanystumdwy. The village, with its nonconformist Welsh liberal tradition, gave the leader, who was one of most influential politicians of the First World War and the Irish Rebellion, his roots and culture. A record of his career can be seen in the museum, which also includes a terraced house named *Highgate*, home and workshop of his uncle, Richard Lloyd, and where the future prime minister was brought up.

Nearby is the **Village Hall** ②. Built in 1912 by means of a donation from Lloyd George with money he won in a libel case, the opening ceremony was dramatic, as members of the suffragette movement decided to take advantage of the situation to promote their battle for women's right to vote.

The **Dwyfor river estuary** ③ is a good spot to watch the wildlife. It's a popular spot for migrant seasonal birds, one or two salmon can be seen leaping in the river at the end of summer and you may well spot some otters here.

**Ty Newydd** ④ is now home to a Writing Centre. The house was originally built by Lloyd George and is a noted example of the work of the architect Clough Williams-Ellis (founder of the Portmeirion village). In 1990, the property was transferred in order to be used as a centre for residential literary and creative courses.

Skilled stonework can be seen around **Lloyd George's Grave** ⑤ above the river Dwyfor. The former prime minister, by then Lord Dwyfor, was granted his wish of being buried on this site above the river of his childhood home. The memorial was designed by Clough Williams-Ellis and displays a 'telyneg' and an 'englyn' (Welsh verse forms) by local poets.

Llanystumdwy is also famous as the home of **Wil Sam** ⑥, a playwright, a writer and an interesting and witty companion. His picture is displayed on the wall of the Feathers Inn and an annual festival is held here to commemorate his contribution. He was born (in 1920) and raised in Ty'n Llan near the bridge and the church, and kept the nearby Crown garage. Along with his brother, Elis Gwyn, he founded 'Theatr y Gegin' in Criccieth and most Welsh people still remember him as the 'father' of Ifas y Tryc.

